

Event R-TÁC

Real Time Access Control

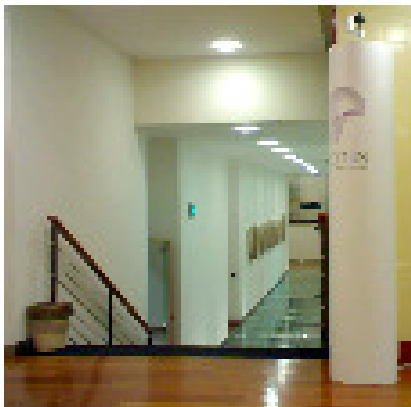
Hands free access control for events and demonstrations

Event R-TÁC - Real Time Access Control

It's finally available: The first system for hands-free access control designed specifically for events and shows.

The Event R-TÁC system is a solution that can control access flows and attendance at events and demonstrations. The system permits monitoring of individual areas and communal spaces. It is possible to see displays of the distribution of participants in the various areas in real time, or to collect data for future statistical analysis.

The system consists of elegant totems that can be personalised with the logos of the show or organisation, and have a big communication impact.



Gateway column in the corridor of the meeting area

Introduction

The system is made up of a collection of columns (totems) into which are incorporated an RFID reader, a dual technology motion sensor and antennas capable of reading a UHF tag badge.

With the basic configuration the gateway consists of just one column. Where it is necessary to trace attendance in wide areas or where short-distance surveillance is required (identification specifically for access) a solution is provided with two columns (master / slave), which are connected to one another

via coaxial cables only.

The columns are placed at the points where the flow of visitors is to be monitored, for example in corridors or at the entrances to meeting rooms.

All the columns are connected by means of a TCP/IP network to a server, on which the flow monitoring software is installed.

Application

On a plan of the complex where the gathering is taking place, the software can display, in graphic form, the flows and the quantity of people present in the various zones.

All data relating to the flows and people present are stored in a database with the aim of carrying out anonymous statistical analysis at the end of the event.



Gateway column within the meeting area

The main characteristics of the Event R- TÁC software platform include:

- Procedure and devices for the registration of RFID badges.

- Control of multiple gateways.
- Logical subdivision into areas.
- Automatic data collection for individual areas.
- Real-time graphic display of attendance.
- Graphic personalisation of columns (gateways).

RFID UHF Technology

The RFID technology used to monitor the flows of visitors is passive UHF technology and is based on the EPC-GEN 2 standard.

The quality of the tag's reading depends on the environmental conditions and the dimensions of the antennas. The totem, comprising a reader with 2-antennas, can cover an area (field) several metres wide (max 5).

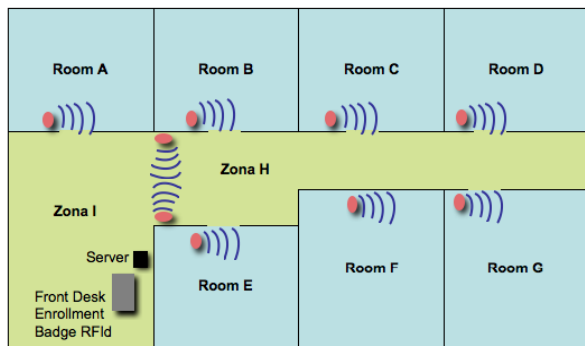
Readers, Antennas and Tags

Kyema's integrated readers are the best on the market in this sector; they have an Ethernet port and can therefore be used by simply connecting them to the local TCP/IP network.



Reader and UHF antenna

The tags are supplied in various formats: adhesive RFID labels that can be attached to the participant's badge, a credit-card style RFID badge in printable PVC or other formats that can be fully personalised according to requirements.



Example of zone and room monitoring

Architecture

All the surveillance totems are connected to the local TCP/IP network; there is no limit to the number of totems and therefore the number of gateways and zones that can be monitored.

The software that manages the gateways and

collects data arrives preinstalled on an "appliance" (computer server ready to use) which is simply connected to the LAN.

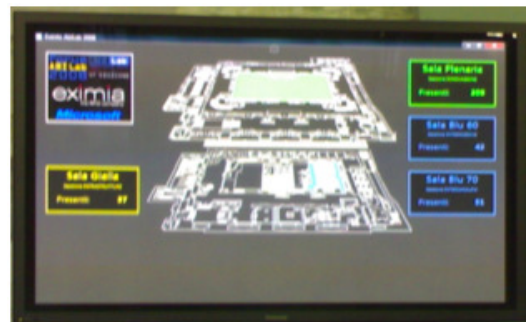
Monitors and displays can be connected to the IT infrastructure and can then display the data on attendance and flows in graphic form by means of a web interface.

The setting up and registration of the RFID badges may take place offline (the tags are formatted before the meeting, for example), or online for last minute formatting, using a normal client PC fitted with an RFID tabletop reader and a badge printer.



Event R-TÁC Appliance server

The number of RFID badges, and therefore the number of participants that can be monitored, is limitless. Kyema has already installed solutions for events with more than 1000 participants.



The real-time display software

Commercial offer

The Event R-TÁC solution is available in two ways:

- Rental:** Kyema takes care of the installation of the solution at the site of the show or event, provides assistance throughout the operation, handles distribution of RFID badges and finally supplies the client with all the data relating to visitor access and flows.
- Purchase:** Kyema supplies the complete hardware and software package, along with a training service and, where necessary, assistance for the client during the first event. The client will therefore manage all future events independently.